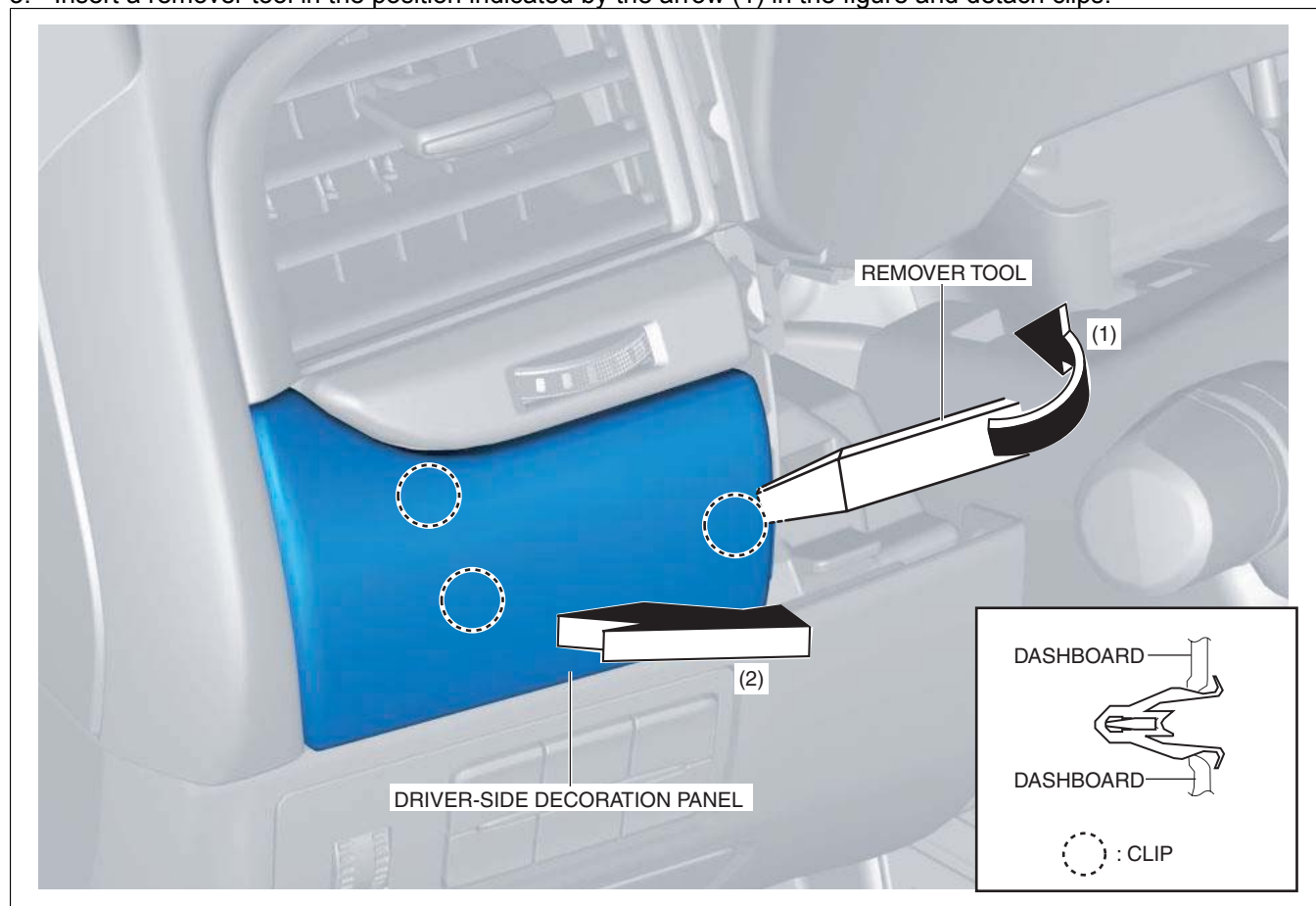


## DECORATION PANEL REMOVAL/INSTALLATION

id091700806600

### Driver-side

1. Remove the upper column cover. (See COLUMN COVER REMOVAL/INSTALLATION.)
2. Remove the meter hood. (See METER HOOD REMOVAL/INSTALLATION.)
3. Insert a remover tool in the position indicated by the arrow (1) in the figure and detach clips.



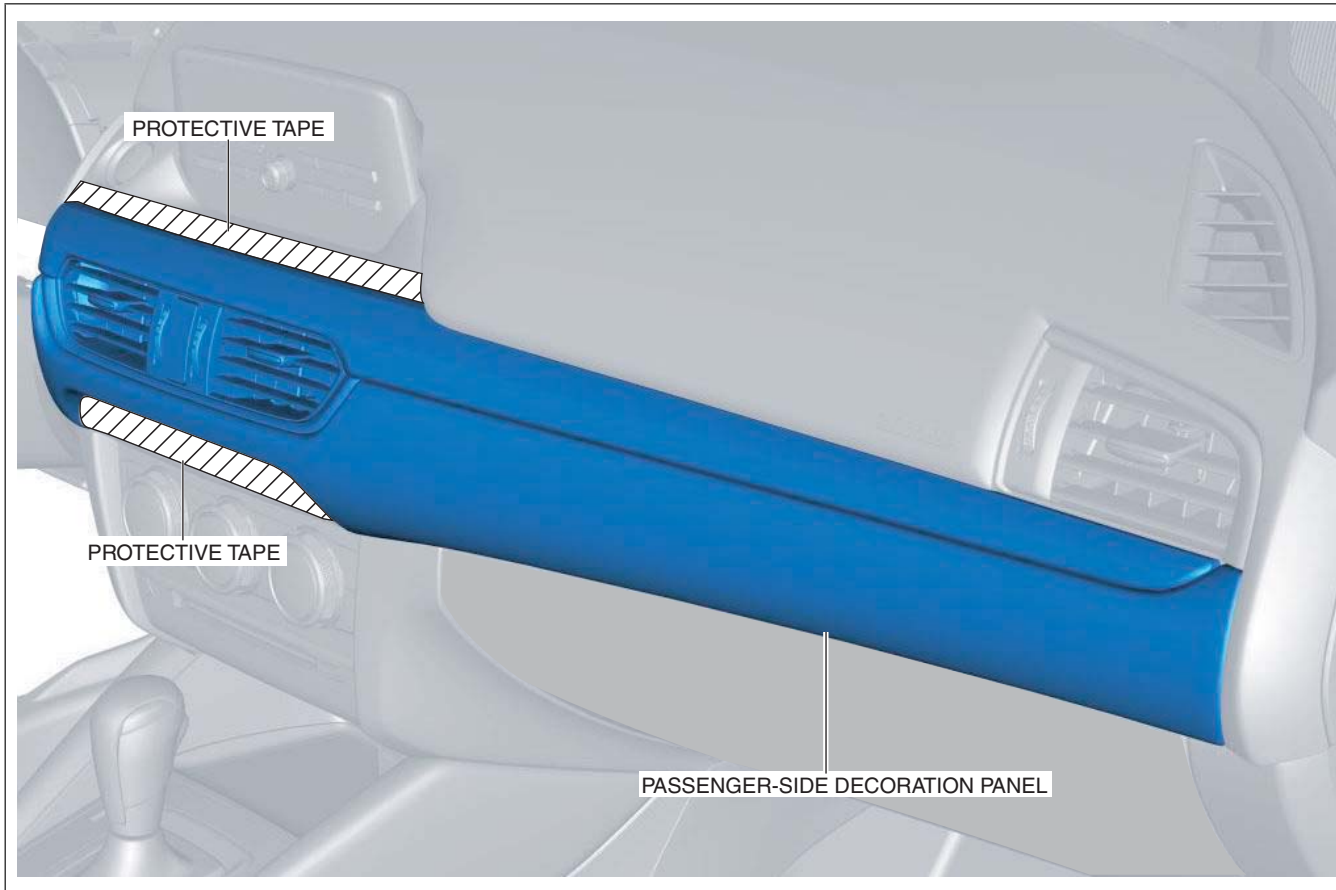
am6xuw00007539

4. Remove the driver-side decoration panel in the direction of the arrow (2) shown in the figure.
5. Install in the reverse order of removal.

### Passenger-side

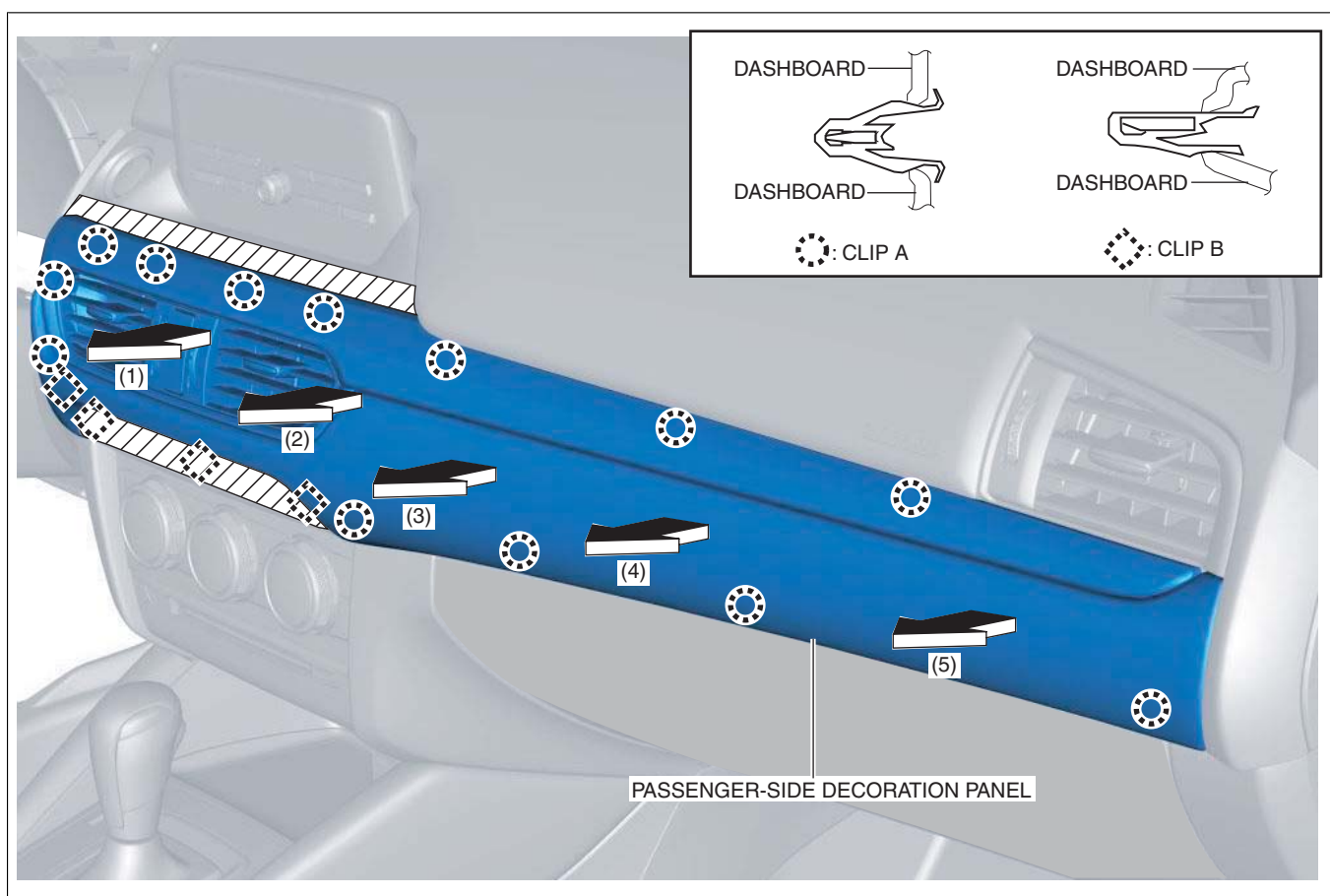
#### Caution

- Affix protective tape to the position shown in the figure.



am6xuw00007540

1. Disconnect the negative battery cable. (See NEGATIVE BATTERY CABLE DISCONNECTION/CONNECTION [SKYACTIV-D 2.2].) (See NEGATIVE BATTERY CABLE DISCONNECTION/CONNECTION [SKYACTIV-G 2.0, SKYACTIV-G 2.5].) (See NEGATIVE BATTERY CABLE DISCONNECTION/CONNECTION [SKYACTIV-G 2.0, SKYACTIV-G 2.5 (WITHOUT i-stop)].)
2. Remove the following parts:
  - (1) Upper column cover (See COLUMN COVER REMOVAL/INSTALLATION.)
  - (2) Meter hood (See METER HOOD REMOVAL/INSTALLATION.)
  - (3) Glove compartment (See GLOVE COMPARTMENT REMOVAL/INSTALLATION.)
3. Move the passenger-side decoration panel in the order of arrows (1), (2), (3), (4) and (5) shown in the figure, and detach clips A and clips B.



am6xuw00007917

4. Disconnect the hazard switch connector.
5. Remove the passenger-side decoration panel.
6. Install in the reverse order of removal.